

BALAD²

3632 - SPIKE STAND

DESIGN BY TRISTAN LOHNER

RESIDENTIAL CONTRACT INTENSIVE **2** IREP IRCY **6**⁷ IPAC



Steel wire frame
Steel clip on the ball joint system, with protective rubber pads
Compatible with:
LAMP H. 10 IN. - BALAD²
LAMP H. 15 IN. - BALAD²

- | | | | | | | |
|--------|--|------------|--------|--|----------------|------------|
| 363247 | | Anthracite | 3632E1 | | Maya Blue | NEW |
| 363282 | | Cactus | 3632E2 | | Candied Orange | NEW |
| 3632A5 | | Clay Grey | | | | |



3631 - UPRIGHT STAND

DESIGN BY TRISTAN LOHNER

RESIDENTIAL CONTRACT INTENSIVE **2** IREP IRCY **7** IPAC



Steel wire frame
Steel ballast
Steel clip with protective rubber pads
Compatible with:
LAMP H. 10 IN. - BALAD²
LAMP H. 15 IN. - BALAD²

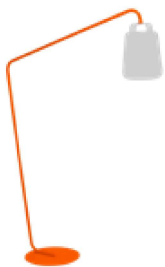
- | | | | | | | |
|--------|--|------------|--------|--|----------------|------------|
| 363147 | | Anthracite | 3631E1 | | Maya Blue | NEW |
| 363182 | | Cactus | 3631E2 | | Candied Orange | NEW |
| 3631A5 | | Clay Grey | | | | |



3630 - OFFSET STAND

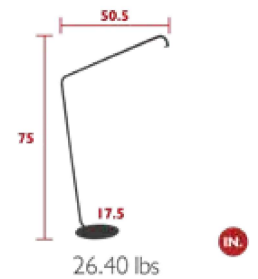
DESIGN BY TRISTAN LOHNER

RESIDENTIAL CONTRACT INTENSIVE **2** IREP IRCY **7** IPAC



Steel wire frame
Steel ballast
Steel clip with protective rubber pads
Compatible with:
LAMP H. 15 IN. - BALAD²
LAMP H. 10 IN. - BALAD²

- | | | | | | | |
|--------|--|------------|--------|--|----------------|------------|
| 363047 | | Anthracite | 3630E1 | | Maya Blue | NEW |
| 363082 | | Cactus | 3630E2 | | Candied Orange | NEW |
| 3630A5 | | Clay Grey | | | | |



Recommendations for appropriate installations:

Choose Balad² H.10 IN. with:



Choose Balad² H.15 IN. with:

